

RISK FACTORS

FOR ADOLESCENT DRUG
AND ALCOHOL ABUSE IN ARKANSAS

2011

The *Risk Factors for Adolescent Drug and Alcohol Abuse in Arkansas – 2011* report demonstrates the Division of Behavioral Health Services' continued commitment to help Arkansans live productive lives, free from the abuse of alcohol, tobacco and other drugs. Through providing the most recent data available and working with community and prevention leaders, we hope to decrease the incidence of substance abuse, violence and other problem behaviors in children.

Ninety-two indicators are compiled and formatted to generate county and regional summaries. Data sources include:

- Arkansas Crime Information Center
- Arkansas Department of Correction
- Arkansas Department of Education
- Arkansas Department of Finance and Administration
- Arkansas Department of Health
- Arkansas Department of Human Services
- Arkansas State Police
- Arkansas Tobacco Control Board
- U.S. Bureau of the Census
- U.S. Department of Labor

For maps and trending data, go to www.afmc.org/riskfactors. County and regional maps have been created for every indicator. Data tables can be exported into Excel or PDF for further analysis.

Visit www.afmc.org/riskfactors
for more information
about the Risk Factors 2011 data and report.

ARKANSAS
DEPARTMENT OF
 HUMAN
SERVICES



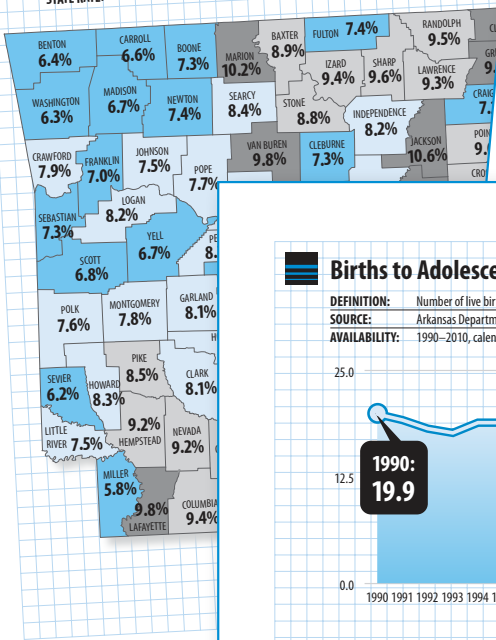
Arkansas Foundation
for Medical CareSM
www.afmc.org

Visit www.afmc.org/riskfactors for more information about the Risk Factors 2011 data and report.

Unemployment Rates, 2010

DEFINITION: An estimate of the number of persons who were able to work and available to work and:
 (1) were looking for work, or
 (2) would have looked for work except that:
 (a) they were waiting to return to a job from which they were laid off, or
 (b) they were waiting to report for a new job.
 The rate is expressed as a percentage of the civilian labor force. These numbers are annual and are not seasonally adjusted.

SOURCE: U.S. Department of Labor, Bureau of Labor Statistics
STATE RATE: 7.9%

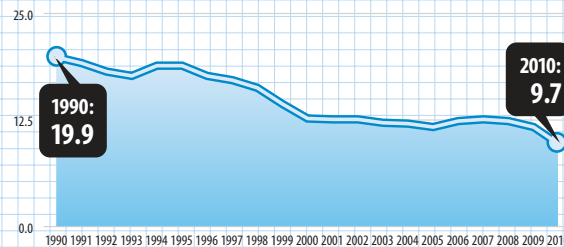


STATE OF ARKANSAS PROFILE

DEMOGRAPHIC DATA	2000		2006		2007		2008		2009		2010	
	NUMBER	RATE	NUMBER	RATE	NUMBER	RATE	NUMBER	RATE	NUMBER	RATE	NUMBER	RATE
■ Economic Data												
■ Civilian labor force	1,260,257		1,354,168		1,361,182		1,370,205		1,370,316		1,353,200	
■ Population												
- Children (under 18)	680,370		693,989		699,458		702,481		709,968		711,475	
- Adolescents (10-17)	312,560		310,003		310,493		309,042		308,854		316,009	
- Adults (18 and older)	1,997,247		2,110,210		2,175,092		2,179,482		2,204,443		2,204,443	
- Total population	2,979,317		3,078,312		3,175,092		3,200,969		3,219,455		3,219,455	
- Population under 21	1,020,120		1,020,120		1,020,120		1,020,120		1,020,120		1,020,120	

Births to Adolescent Mothers, 1990-2010

DEFINITION: Number of live births to girls ages 10-17, per 1,000 girls ages 10-17.
SOURCE: Arkansas Department of Human Services, Center for Health Statistics
AVAILABILITY: 1990-2010, calendar year



Births to Women Using Alcohol During Pregnancy, 2000-2010

DEFINITION: Number of births to women who used alcohol during their pregnancy per 1,000 total births.
SOURCE: Arkansas Department of Health, Center for Health Statistics
AVAILABILITY: 2000-2010, calendar year

