

## Recognizing the harmful effects of teenage drinking

# ARKANSAS' UNDERAGE ALCOHOL PROBLEM

### ON AVERAGE ...

#### By 7th grade:



Arkansas kids **take their first drink**<sup>1</sup>

#### By 8th and 9th grade:



Arkansas kids **start drinking regularly**<sup>1</sup>

#### By 12th grade:



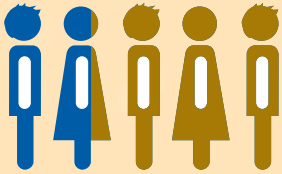
Nearly **1 out of 3** has drank in the last month<sup>1</sup>



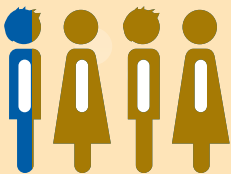
**More than 1 out of 2** has consumed alcohol in their lifetimes<sup>1</sup>

### BINGE DRINKING\*

*\*At least five drinks for boys, four drinks for girls*



- **More than 1 out of 5** Arkansas high schoolers participated in binge drinking in the past 30 days<sup>2</sup>



- **Nearly 1 out of 4** Arkansas 12th graders participated in binge drinking in the past two weeks<sup>2</sup>

### DRINKING AND DRIVING



- **More than 1 out of 9** Arkansas high schoolers have driven after drinking<sup>2</sup>



- **Almost 1 out of 4** Arkansas high schoolers have ridden with a driver who was drinking<sup>2</sup>

### WHAT CAN PARENTS DO?

- **Talk with your children** about alcohol as early as possible
- **Avoid drinking around children**
- **Be involved!** Attend your children's events. Get to know their friends.
- **Call 1-800-662-HELP for treatment options** if your teen has started drinking

For more information, visit [preventionworksar.org](http://preventionworksar.org) and [toosmartostart.samhsa.gov](http://toosmartostart.samhsa.gov)



REFERENCES: 1. Arkansas Prevention Needs Assessment, 2014 • 2. Center for Disease Control, Youth Risk Behavior Surveillance System, 2013

THIS MATERIAL WAS PREPARED BY THE ARKANSAS FOUNDATION FOR MEDICAL CARE INC. (AFMC) PURSUANT TO A CONTRACT WITH THE ARKANSAS DEPARTMENT OF HUMAN SERVICES, DIVISION OF BEHAVIORAL HEALTH SERVICES. THE CONTENTS PRESENTED DO NOT NECESSARILY REFLECT ARKANSAS DHS POLICY. THE ARKANSAS DEPARTMENT OF HUMAN SERVICES IS IN COMPLIANCE WITH TITLES VI AND VII OF THE CIVIL RIGHTS ACT. 3/16